

S. Adalberti, episcopi et martyris

cbre 310r; nic 264v; kol1 280r; hr4 197r; khg 116r; pint 27r; prosch 460

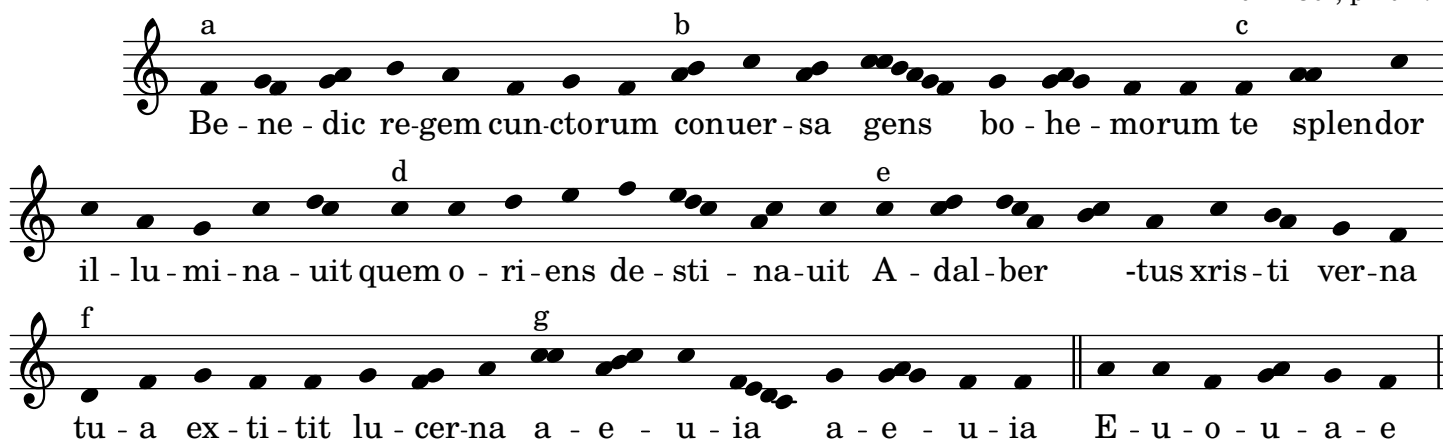
in i. vesperis

cbre 310r



Be - ne - dic re - gem cunctorum con - uer - sa gens bo - he - morum te splendor
il - lu - mi - na - uit quem o - ri - ens de - sti - na - uit A - dal - ber - tus xris - ti ver - na
tu - a ex - ti - tit lu - cer - na a - e - u - ia a - e - u - ia E - u - o - u - a - e

kol1 280r, pint 27r



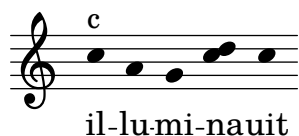
Be - ne - dic re - gem cun - ctorum con - uer - sa gens bo - he - morum te splendor
il - lu - mi - na - uit quem o - ri - ens de - sti - na - uit A - dal - ber - tus xris - ti ver - na
tu - a ex - ti - tit lu - cer - na a - e - u - ia a - e - u - ia E - u - o - u - a - e

khg 116r



con - uer - sa gens

khg 116r



il - lu - mi - nauit

khg 116r



quem o - ri - ens de - sti - nauit

nic 264v

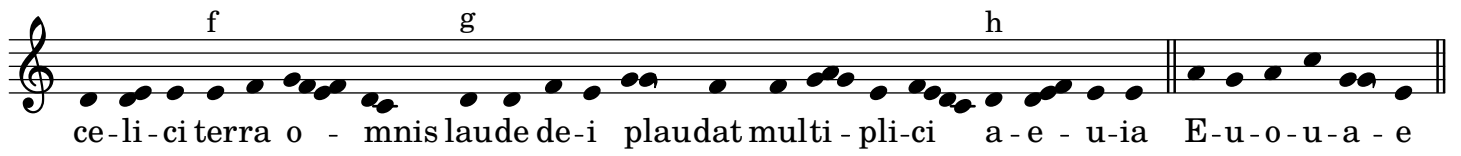


de - sti - nauit

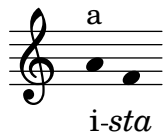
hr4 197r; khg 116r



a - dal - ber - tus



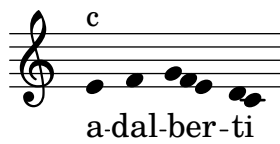
hr4 197v



hr4 197v



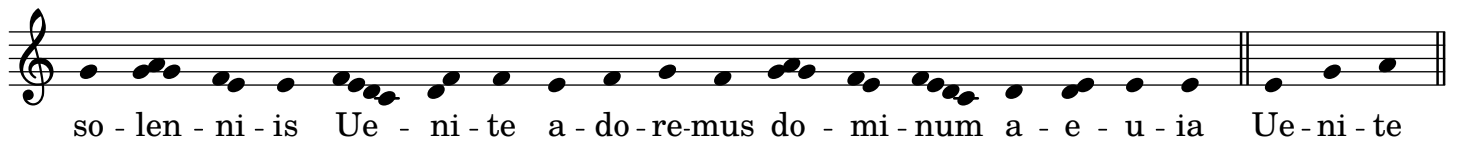
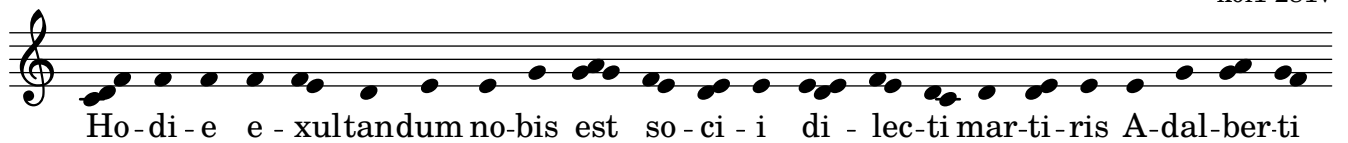
hr4 197v



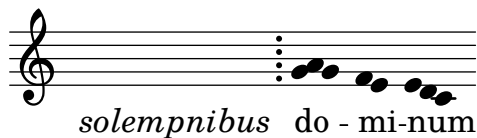
ad matutinum

Hoc invitatorium in breviariis ecclesiae pragensis typis impressis atque manu scriptis (etiam cbre310) non invenitur, sed invitatorium de communi martyrum tempore paschali Alleluia. Regem martyrum praescribitur.

kol1 281v

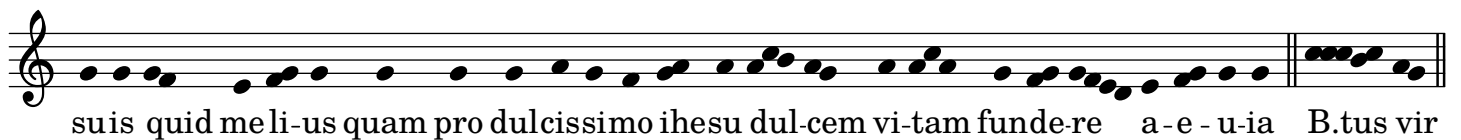


nic 265v



in (solo) nocturno

kol1 281v

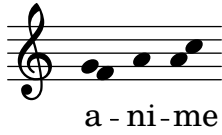


cbre 310v; hr4 197v



khg 116v

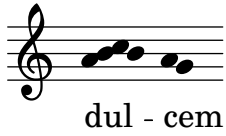




cbre 310v



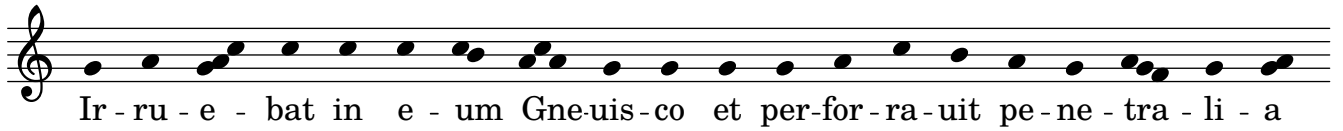
cbre 310v; hr4 197v; khg 116v



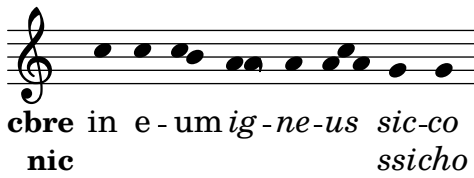
khg 116v



kol1 282r



cbre 310v; nic 266r



khg 116v



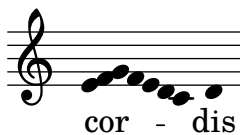
hr4 197v



cbre 310v

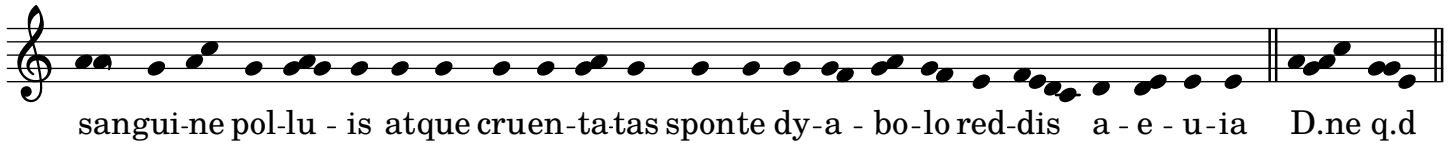


khg 116v



hr4 197v; khg 116v





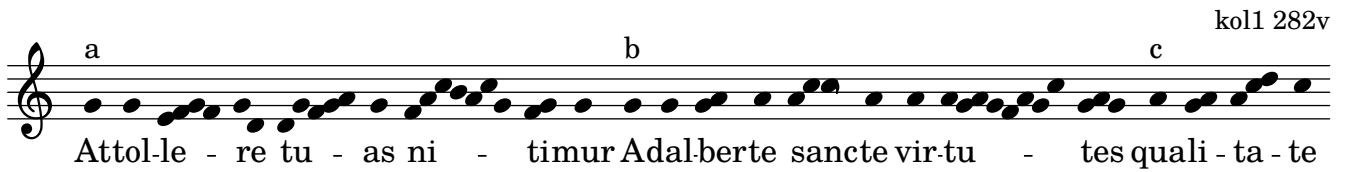
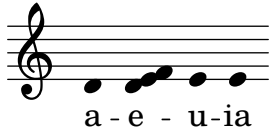
cbre 310v; khg 116v



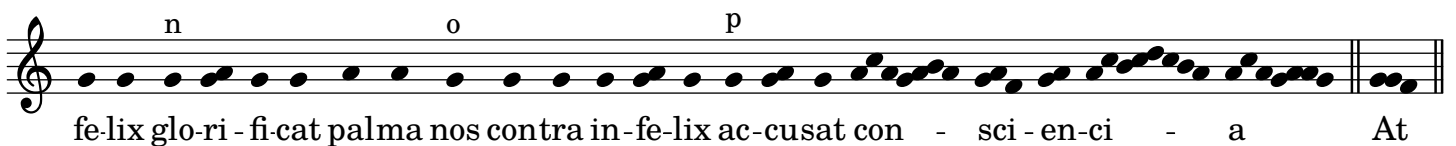
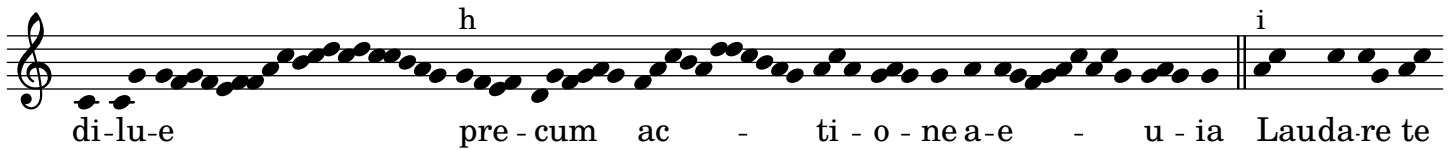
cbre 310v



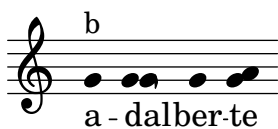
nic 266r

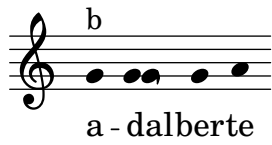


kol1 282v



cbre 311r; khg 117r





cbre 311r



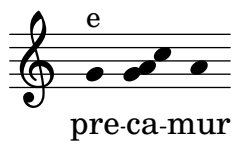
cbre 311r; nic 266r; khg 117r



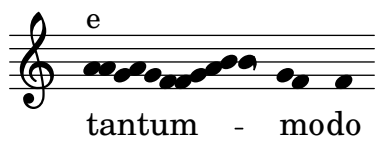
nic 266r; khg 117r



khg 117r



cbre 311r



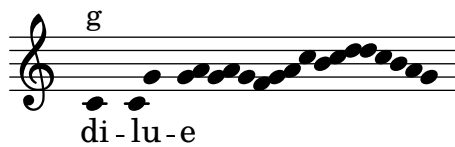
khg 117r



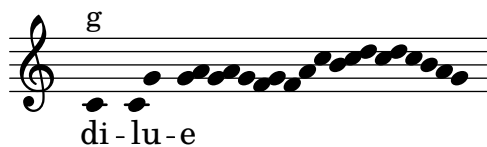
nic 266v



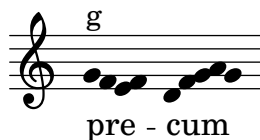
cbre 311r



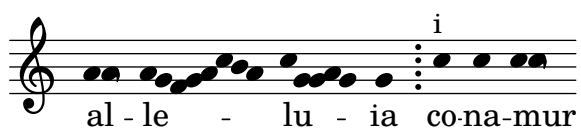
nic 266v; khg 117r



nic 266v



cbre 311r



j
con-trari - i

cbre 311r

k
pre-di-ca-re

khg 117v

l
o - pe - re

nic 266v

m n
quippe fe-lix glo-ri-fi-cat

nic 266v

n
palma

khg 117v

n
palma

nic 266v

o
noc contra in-fe-lix

cbre 311r

p
con - sci - en-ci - a

nic 266v

p
con - sci - en-ci - a

khg 117v

p
con - sci - en-ci - a

*In koll et nic tantum duo responsoria ponuntur in matutino et tertium responsorium O presul ponitur in primis vesperis. Ex eo, quod secundo responsorio doxologia subiungitur, ut mos est pro ultimo responsorio cuiusque nocturni, deducimus, responsorium O presul hic in matutino non esse canendum (ut in breviariis pragensibus praescribitur), sed post tertia lectione sine responsorio Te Deum subsequere. Sed contra est quod **cbre**, omnes tres responsoria in matutino habens, secundo responsorio doxologiam tamen subiungitur.*

a b c
Al-me pre - sul et be - a - te de-i mar - tir A-dal - ber - te con - fer

koll 283r

o - pem pe - ten - ti - bus tu - is sanctis preci - bus ma - la pel - le bo - na pos - ce Presta
 pa - cis in - cre - men - tum sa - ne vi - te pre - mium a - e - - - u -
 ia Ut sub tu - o protec - ti patro - ci - ni - o glori - emur in lau - de de - i per - pe - tu - o
 Pre Glo - ri - a pa - tri et fi - li - o et spi - ri - tu - i san - cto Presta

b
 ad - al - ber - te

cbre 311v

a
 be - a - te

cbre 311v; nic 266v; khg 117v

e
 ma - la

khg 117v

e
 pos - ce

cbre 311v

f j k
 pa - cis fi - li - o et spi - ri - tu - i sanc - to

pint 27v

j k
 Fi - li - o et Spi - ri - tu - i

kol1 280v

a b
 O presul xri - sti A - dal - ber - te Bo - he - mo - rum pa - tro - ne

c d
 glo - ri - o - si - ssime signo - rum vir - tu - te cla - re au - di vo - ces nos - tras

e
 co - ram te fu - sas Et fac nos e - ter - na - li cho - - - ro

iun-gi a-e - u - ia Preci-bus er-go tu-is a - des-to ca-la-mi-ta-tibus qui - bus
 graua-mur Et fac Glori - a pa-tri et fi - li - o et spi - ri - tu-i san-cto Et

cbre 311v; khg 118r

a
 a - dal - berte

nic 265r

a
 a - dal - berte

cbre 311v

b
 bo-he-mo - rum

khg 118r

b
 bo-he-mo - rum

cbre 311v

b
 pa - tro - ne

cbre 311v

b
 glo-ri - o - sis - si-me

khg 118r

b
 glo-ri - o - sis - si-me

cbre 311v

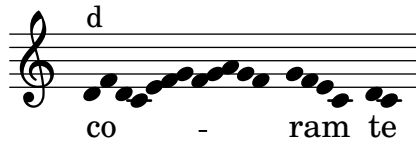
c
 vir-tu - te

cbre 311v; nic 265r; khg 118r

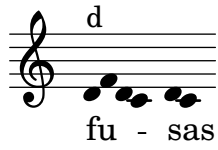
d
 no - stras

cbre 311v; nic 265r

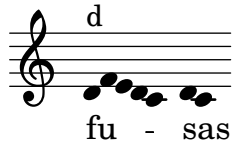
d
 co - - ram te



cbre 311v



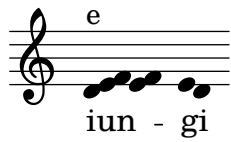
nic 265r; khg 118r



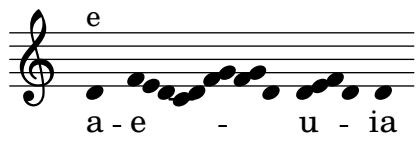
nic 265r



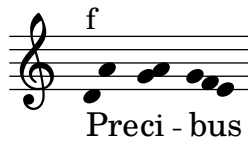
cbre 311v



nic 265r; khg 118r



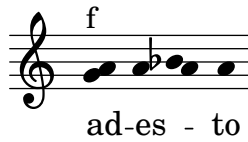
pint 27r



khg 118r



cbre 311v



khg 118r



cbre 311v



nic 265r; pint 27r; khg 118v



g

et spi-ri - tu-i

khg 118v

g

et spi-ri - tu-i

ad laudes

kol1 283v; nic 267r

Hic martir sanctus bo - he-morum ger - mi - ne na-tus sed in me - li - us

na - ta - le tri-umpho ce-les - ti pur-ga - tus a - e - u - ia E - u - o - u - a - e

pint 27v; khg 118v

Bo-hemorum

cbre 312r

sed

cbre 312r

in me-li-us

khg 118v

in meli-us

khg 118v

purga-tus

kol1 284r; nic 267r; pint 27v

Qui qui-dem vic - tor xri - sti se - met tra - di - dit de - o et

lu - cra - tus est in e - o a - e - u - ia E - u - o - u - a - e

cbre 312r

vic-tor



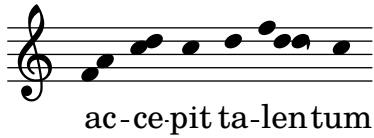
kol1 284r



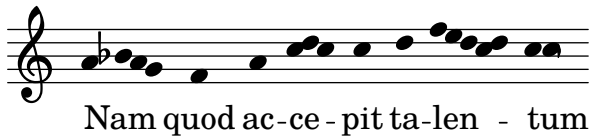
nic 267v



khg 118v



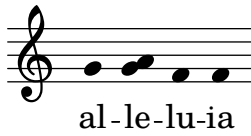
pint 27v



khg 118v



khg 118v

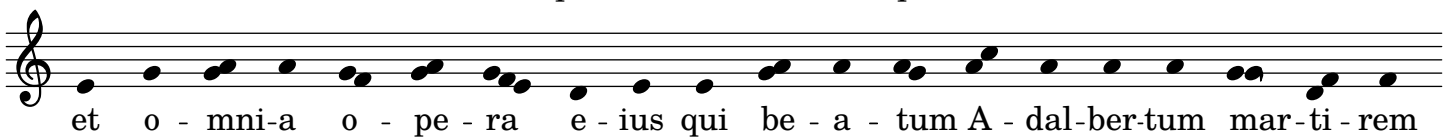
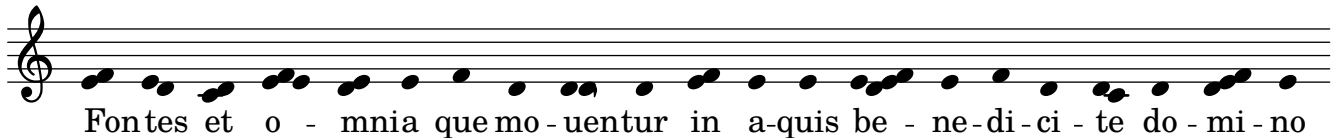


*Textus alleluia in **cbre** deest, sed valde certum est hoc tantum scribae errorem esse.*

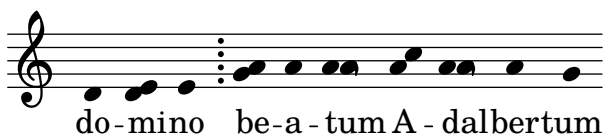
cbre 312r



kol1 284r



nic 267v



?

Fon-tes et o - mnia que mo - uentur in a - quis be - ne - di - ci - te do - mi - no

?

et o - mni - a o - pe - ra e - ius qui be - a - tum A - dal - bertum mar - ti - rem

ho - di - e cho - ris iun - xit ce - les - ti - bus a - e - u - ia E - u - o - u - a - e

kol1 284v; pint 27v

a b c

Lau - da - te do - mi - num in ce - lis o - mnes ce - lo - rum vir - tutes qui vo - bis ad - iun -

d e f

xit so - ci - um de bo - he - mi - a natum profes - si - o - ne monachum promoci - o - ne e - pi - scopum

g h i j

ro - me e - xu - lem sed prus - si - e mar - ti - rem ex - tensis brachi - is ex - spirantem de - um

k

con - fes - sum per va - ri - a ge - ne - ra tor - mento - rum a - e - u - ia E - u - o - u - a - e

cbre 312r; khg 119r

a

do - mi - num

nic 267v

a

do - mi - num

khg 119r

a

de ce - lis

cbre 312r

b

ce - lo - rum

nic 267v; khg 119r

b

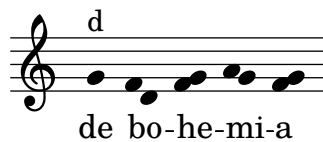
vir - tutes



nic 267v; khg 119r



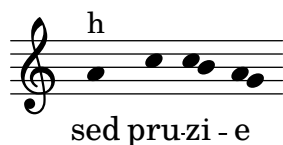
cbre 312r; khg 119r



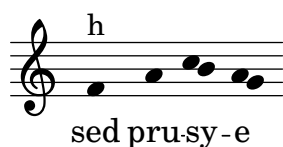
khg 119r



cbre 312r



khg 119r



cbre 312r



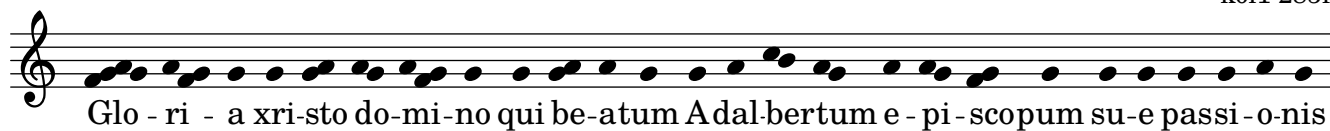
cbre 312r; nic 267v; khg 119r



cbre 312r; nic 267v; khg 119r



kol1 285r



cbre 312v

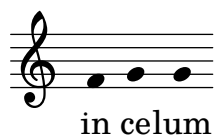


Pro antiphona iv.

cbre 312v; pint 27v



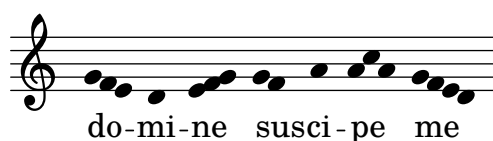
nic 268v; khg 118v



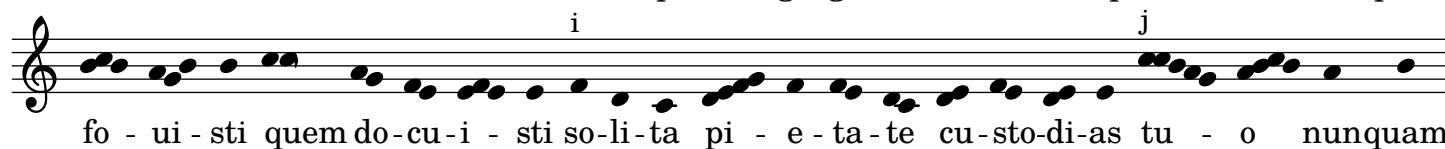
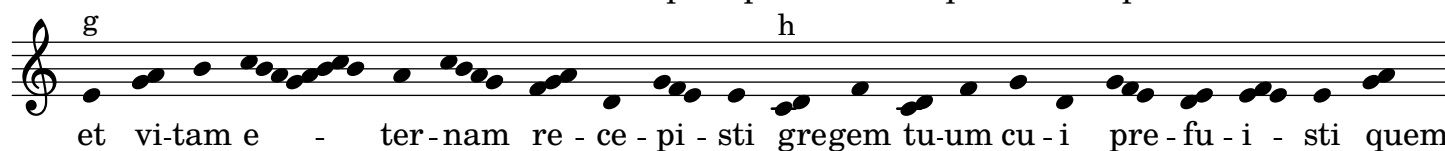
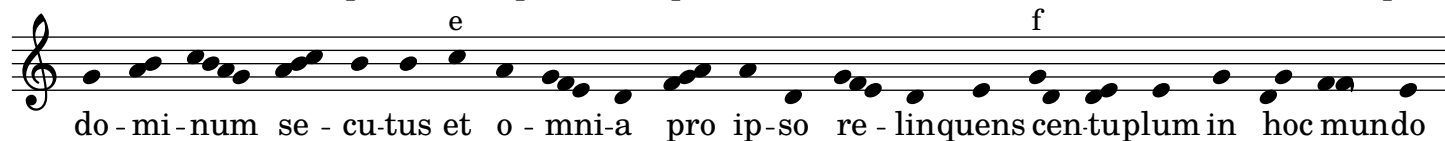
khg 118v



nic 268v



kol1 285r



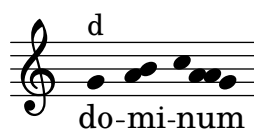
cbre 312v; khg 119r



cbre 312v



khg 119r



me - tis o - uans o - ra pro po - pu - lo ti - bi de - uo - to post pro - spe - rum hu - ius
 vi - te decursum sempi - ternum pos - cen - do gau - di - um a - e - u - ia E - u - o - u - a - e
 nic 268v

e - gre - gi - e
 nic 268v

bo - e - mo - rum Ad - alberte
 nic 268v

me - tis
 nic 268v

?
 hu - ius vi - te de - cursum
 prosch 460

In - cly - te Martyr, * Pastor e - grégi - e, de - cus Bo - hemórum, sancte A - dal - bérté,
 o - ra pro pó - pu - lo ti - bi de - vó - to, et u - ni - vér - sa sancta ci - vi - tá - te.